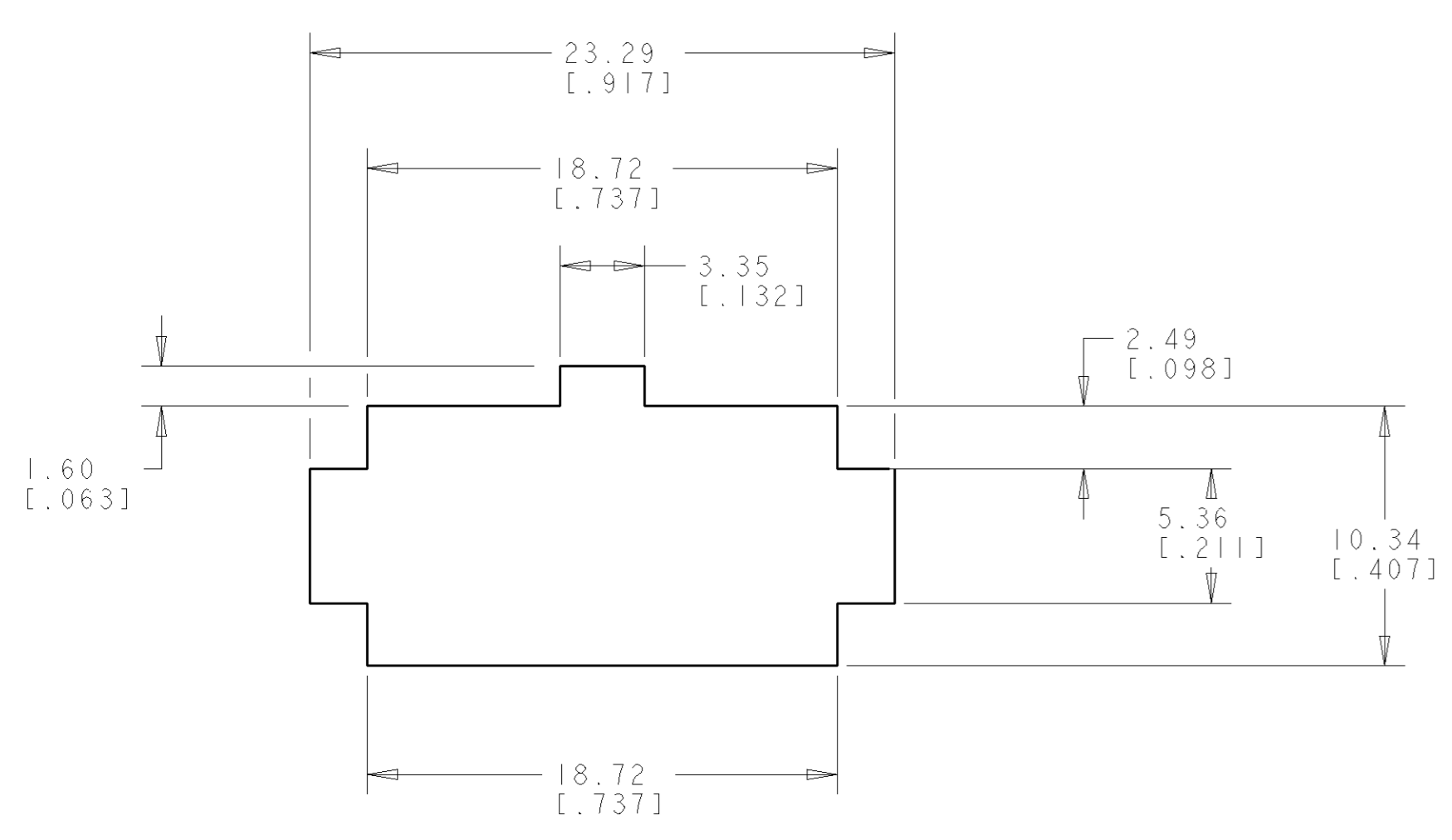
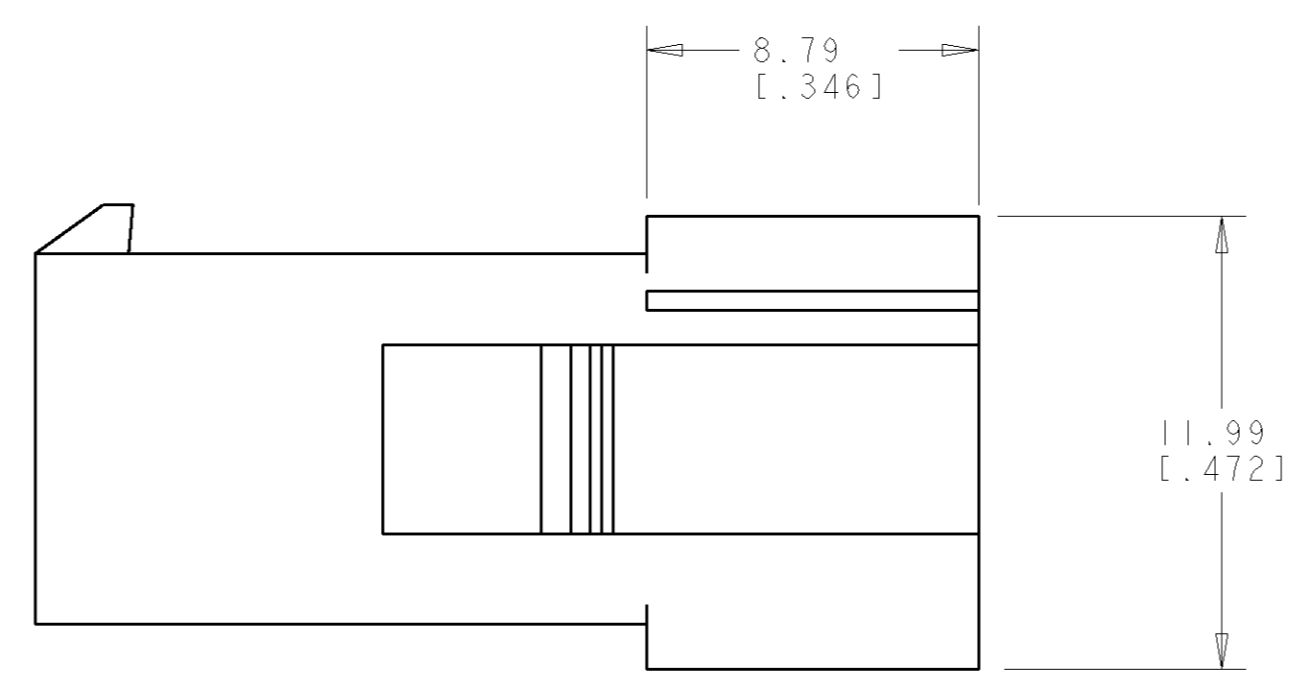
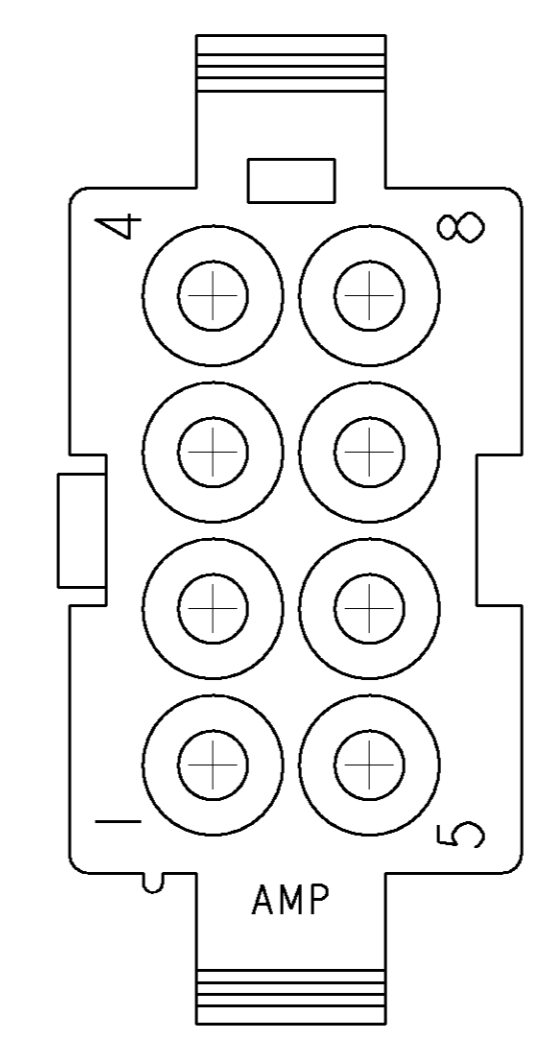
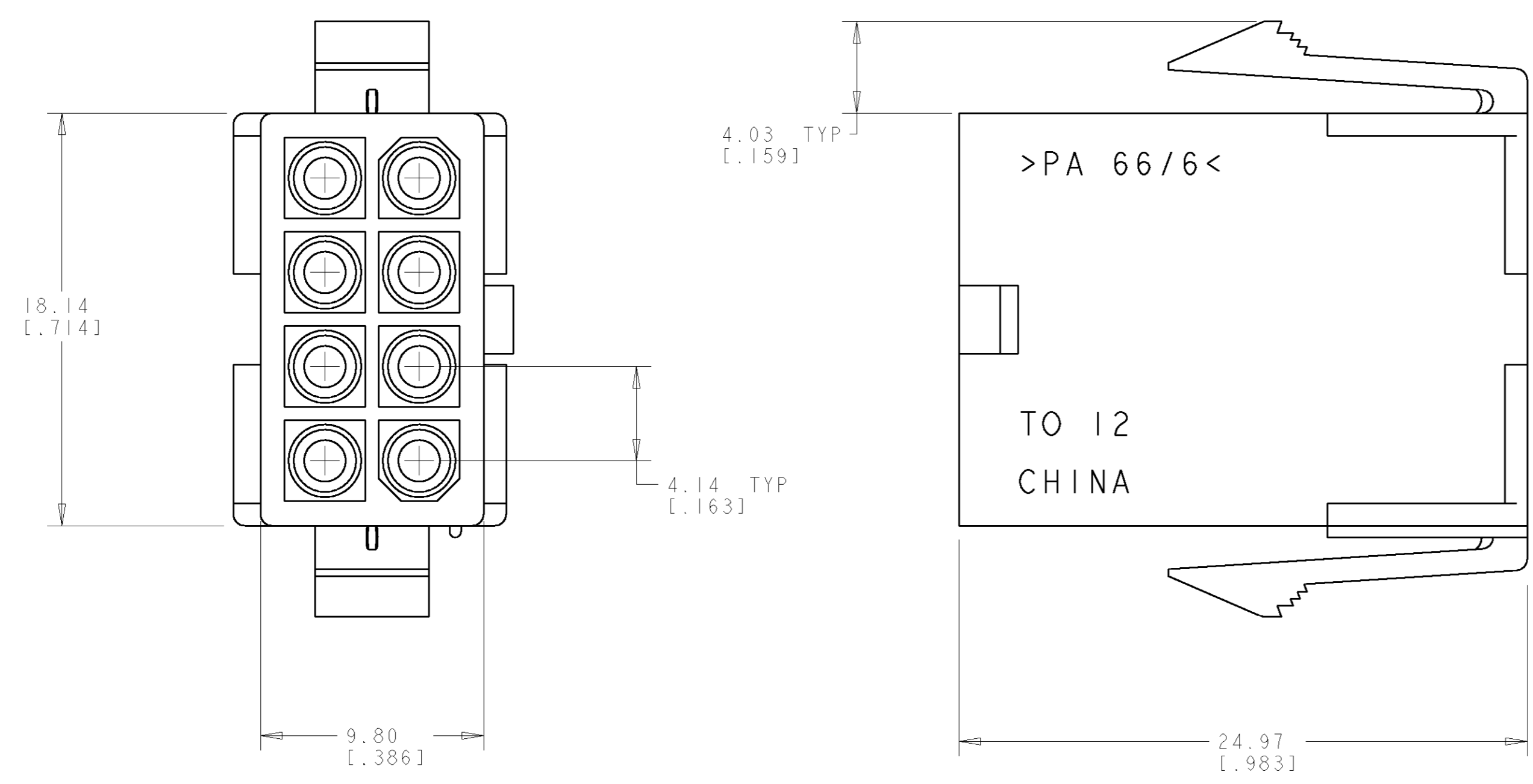


LOC		DIST		REVISIONS			
CM	00	P	LTR	DESCRIPTION	DATE	DWN	APVD
		B		REVISED PER 0638-251-04	12JUL04	KW	CJ

1. APPLICABLE CONTACT P/N: 170539, 170360, 170361, 170362.
2. DIMENSIONS IN BRACKETS ARE IN INCHES.
3. RECOMMENDED PANEL THICKNESS TO BE 0.8-2.0 [.031-.079].
4. HOUSING INSERTION INTO THE PANEL CUT OUT MUST BE IN THE SAME DIRECTION AS THE PUNCH.



RECOMMENDED PANEL CUT OUT  
 SCALE 4:1

794941-1  
 PART NUMBER



<small>THIS DRAWING IS UNPUBLISHED. RELEASED FOR PUBLICATION. THIS IS SUBJECT TO CHANGE. THE CUSTOMER AND SUPPLIER SHALL BE CONTACTED FOR THE LATEST REVISION.</small>		DWN: 23-JULY-2001 R. WHITAKER CHK: 23-JULY-2001 C. JONES APVD: 23-JULY-2001 P. JONES	<b>Tyco</b> <b>Electronics</b> Tyco Electronics Harrisburg, PA 17105-3608
DIMENSIONS: mm [ INCHES ]	TOLERANCES UNLESS OTHERWISE SPECIFIED: 9 PLC ± 2 PLC ±0.13 [.005] 3 PLC ± 4 PLC ± ANGLES 40°±30°	NAME: CAP. PRODUCT SPEC: 8 CIRCUIT, SEALED APPLICATION, APPLICATION SPEC: MINI UNIVERSAL MATE-N-LOK™	SIZE: A CAGE CODE: 00779 DRAWING NO: C-794941 RESTRICTED TO: -
MATERIAL: NYLON UL94V-0 NATURAL	FINISH: -	WEIGHT: - CUSTOMER DRAWING	SCALE: 5:1 SHEET: 1 OF 1 REV: B